

#ColiveCares

Isolation & Healing Centers

in association with

PORTEA[®]
HEAL AT HOME

#ColiveCares

COLIVE HEALING CENTERS (CHC)

UNDER
REMOTE
MEDICAL
SUPERVISION



An **anxiety-free zone** to recover from **COVID blues**



With **tele-consult with a doctor** at all times by Portea

#ColiveCares

ARE YOU
COVID
POSITIVE



DON'T
PANIC.

MOVE
TO CHC

LIVING ALONE? → GET SERVICED AT DOOR STEP

LIVING WITH FAMILY? → DON'T **INFECT** THEM!
STOP THE SPREAD

PSYCHED ABOUT COVID? →

REMAIN UNDER REMOTE
MEDICAL SUPERVISION!



~~SOME
RESOURCES~~
PEOPLE
ARE SIMPLY
INVALUABLE.

YOU KNOW WHO THEY ARE.

GROUND OPERATIONS STAFF
SUPERVISORY STAFF
DELIVERY STAFF
MANAGERIAL RESOURCES



#ColiveCares

#ColiveCares

Colive Healing Center under Remote Medical Supervision*

Available for mild & asymptomatic guests only, with **SPO2 greater than 94%**. Please refer to the complete fact-sheet (T&C) for more details.

*In association with **PORTEA**

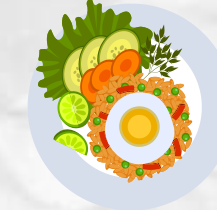
** Based on **availability** only

Expect those marked in star above. All points are included in Colive Isolation Centers (CIC)

INCLUSIONS



Private & fully-furnished rooms with attached washrooms



3 healthy meals with water, delivered to doorstep



Fumigation & sanitization prior to arrival of guests



Regular maintenance & sanitization of common areas



Complimentary medical kit for every guest



Hi-speed WiFi to enable remote productivity for all guests



Remote monitoring of vital stats* by medical professionals



Teleconsultation with Nutritionist*



Attenders on premises**



Regular updates to local guardian about the guest's condition**

#ColiveCares

**10 DAYS
HEALING
PACKAGE**
₹19,000

per room

INCLUDES

**3 nutritious
meals per day
per person**



**REMOTE MEDICAL
CONSULTATIONS BY PORTEA**

#ColiveCares

**WEEKLY
ISOLATION
PACKAGE**

₹9,000

per room

INCLUDES

**3 nutritious
meals per day
per person**

**FOR NON
COVID+ GUESTS**

COLIVE HEALING CENTER

#ColiveCares

#ColiveCares

COMPLIMENTARY MEDICAL KIT

10 pairs of **medical gloves**
10 personal masks
1 **hand-sanitizer** bottle
1 **soap & hand-wash** dispenser



REMOTE MEDICAL CONSULTATIONS BY PORTEA

REMOTE MEDICAL SUPERVISION PLAN

- Daily **Follow-Up Calls**
- Teleconsultations With **Doctors**
- Teleconsultations With **Nutritionists**

PLEASE NOTE



Garbage bags will be provided for the entire duration of stay.



Cost of specialized treatment & medicines is not included

Portea's end to end Remote medical care Solution for your Patients

HELPLIN



- Answers to common COVID specific questions
- Information about authorized COVID care centers/VRDL centers
- Protocols and measures for COVID prevention

TELE - CONSULTATION



- Doctors addressing common condition-based queries /Medical concerns
- Enabling Patients to better manage their health condition in general disease symptoms
- Suggesting the way forward in case of suspicion of COVID-19 infection.

NUTRITION TELECONSULTATION



- Nutritionists on call to help employees with diet counselling'
- Provision of condition specific recommendation
- Diet chart and follow up

On boarding Criteria

Inclusion Criteria

- Age criteria-anybody between 18 to 60 years
- Remote screening/assessment as per per-defined criteria
- Asymptomatic/Mild symptoms as defined by ICMR
- Should have separate room with attached washroom for patient
- Controlled comorbidities like DM, HTN and Hypothyroidism
- Availability of basic devices to monitor vitals
- Availability of Masks and basic disinfection kit
- Arogya setu app must be installed
- Covid positive report (RTPCR)

Exclusion Criteria

- Age below 18 and above 60 excluded
- COVID19 infection with moderate, severe symptoms, severe manifestations and respiratory distress
- Non-cooperative/Non-responding patient and caregiver
- Patient on Dialysis, Oxygen support at home, Unconscious
- Pregnancy
- Uncontrolled DM, HTN and Hypothyroidism, other conditions like Bronchial Asthma, TB, COPD, Chronic Liver & Kidney disease, Coronary artery disease, Post CABG status etc.
- Immune compromised (long term steroids, post organ transplant, HIV, Hep B, Cancer)
- Bed bound 24/7, Unconscious and paralysed
- Patients with Tubes Insitu like RT, Urine catheters etc.

Note : Gov. Guidelines on Home isolation will be followed strictly for all patients.

Criteria to shift patient to hospital

- Fever >100 F
- Pulse >100
- Oxygen levels below 95%
- Breathing difficulty
- Numbness
- Cyanosis
- Palpitations
- Uncontrolled values of BP (>160/80 and <110/70) and blood glucose level (<80 and >250)
- Respiratory distress of any severity
- Worsening of symptoms and not responding to given treatments
- Chest discomfort, chest pain and Mental confusion
- Poor feeding, Drowsy, Unconscious
- Convulsions
- By order of a treating doctor

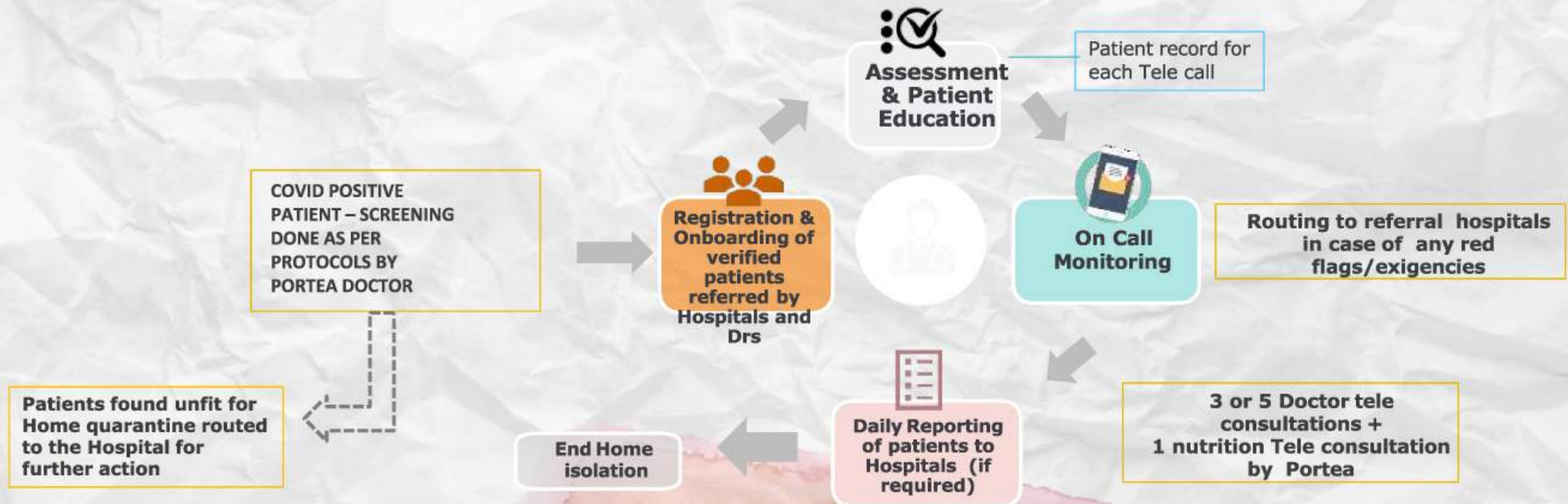
Discharge criteria

A patient under home isolation can be discharged on the 10th day from date of positive report, provided there is no fever for the last 3 days and then he is asked to self-isolate and monitor at home for the next 7 days. If patient has fever in the last 3 days then the home isolation can be extended for the next 3 days. Only one extension is possible. If further extensions required then patient should be hospitalised.

Note : Gov. Guidelines on Home isolation will be followed strictly for all patients.

Process Overview for COVID positive patients

Supportive Care Program (for Covid positive at Home)



#ColiveCares

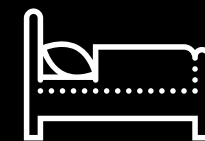
IMPORTANT DISCLAIMER

This arrangement is under no circumstances to be considered an effective alternative to hospitalization. In case of any emergencies or red-flags, the specified emergency contact is responsible for all necessary escalations (to a nearby hospital/ medical facility) and for making necessary arrangements (ambulances, etc).

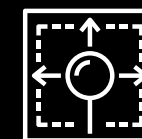
About Colive

Colive is a technology-enabled network of fully managed rental homes. These ready-to-move-in homes are conveniently located in close proximity to IT parks and educational institutes. Colive homes are aesthetically designed spaces with chic designs and contemporary interiors, equipped with modern tech-enabled features.

All Colive Homes are fully serviced, and professionally managed with flexible affordable options suitable for urban living.



30,000+
Beds



6 mn sq.ft/ ₹30 Bn
Under Asset Mgmt



150+
Employees



125+
Years of
Real estate exp.



4
Cities



150+
Properties



90%
Peak
Occupancy

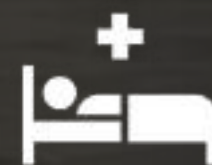


₹9,000 & ₹16,000
Avg Monthly Rent

About Portea

Portea Medical (www.portea.com) is India's leading consumer healthcare provider, operating across primary care, preventive healthcare, nutrition, chronic disease management, elderly care, post-operative care and diabetic management.

We offer home visits from doctors, nurses, nursing attendants, and physiotherapists at your convenience. Portea also provides a collection of lab samples and offers medical equipment for rent & sale, as well as patient assistance programmes for chronic disease management, bringing the entire gamut of healthcare services to the patient's doorstep. We are currently operational in 16 cities across India including Bangalore, Chennai, Chandigarh, Delhi, Faridabad, Gurgaon, Ghaziabad, Hyderabad, Indore, Jaipur, Kolkata, Lucknow, Mumbai, Noida, Pune, and Vijayawada.



10,00,000
Patients
serviced so far
with homecare



1,00,000+
Transactions
per month



16
cities



100+
Hospital
Partners



4,500+
Service
caregivers



Thank you.

REACH US ON
7676 000 500

OR WRITE TO
corporate@colive.com

CONNECT & FOLLOW



fb.com/colive.in



@lets_colive



@colive.in



coliveyourway